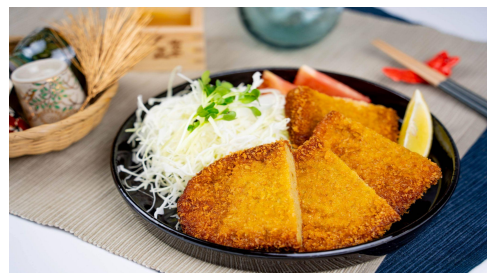


# Model Course Information【 Anan City, Minami Town】

## For business

| Title                                       | Regional challenge to create a new food model to support Japan as the Reconstruction Powerhouse Seaweed Bed Restoration (countermeasures against rocky shore denudation) Project   |      |   |
|---|--|------|---|
| Municipalities included in the Model Course | Anan City, Minami Town   | Cost | Estimated on a Case-by-Case Basis. Please inquire.                      |
| Concept Facility Overview Activities        | This tour allows business people to experience regional problem-solving, new business development, and social contribution activities. The course focuses on exchanges with farms working on establishing a new style of agriculture (direct sales system by farmers) and creating a system specialized in reconstruction food production, as well as exchanges with organizations working on introducing social businesses based on restoration of seaweed beds (countermeasures against rocky shore denudation) and utilization of fish that had been considered waste. It enables participants to gain inspiration and insights into the SDGs and carbon neutrality by witnessing firsthand the 6th industrial revolution related to agriculture, disaster-resistant food production initiatives, and blue carbon ecosystem conservation efforts. |      |   |
| Dates                                       | Available starting September 1, 2024 (Sun.)<br>The schedule depends on the program contents. Please inquire for more details.  |      | Minimum number of participants: 5<br>Maximum number of participants: 10 |
| Application deadline                        | Up to 14 days in advance   |      |   |
| Transportation to the Site                  | Rental car   |      |   |
| Points to Note when Applying                | <ul style="list-style-type: none"> <li>•A local tour guide will be available upon request for an additional fee.</li> </ul>  |      |   |

### Model course example (image)



# Model Course Information【 Anan City, Minami Town】

## For business

### Model course (example)

|      | Time | Municipalities included in model course | Transportation | Tour Details   | Accommodation  |
|------|------|---|----------------|--|--|
| DAY1 | PM   | Anan City                               | by car         | <p>■ Sunnys Farm (approximately 3 hours max. at the Farm)<br/>           * Please take care of your lunch beforehand.<br/>           &lt;Topics to be covered&gt;</p> <ul style="list-style-type: none"> <li>▪ Current Situation Surrounding Agriculture (Sharing Awareness of Issues)</li> <li>▪ Creating a New Model for the Sixth Industrialization of Agriculture (Independent Sales System, Ethical Consumption, Organic School Meals, etc.)</li> <li>▪ Current Situation in Disaster Recovery (Sharing Awareness of Issues)</li> <li>▪ BCP Measures (Establishing a System for Emergency Rations for Recovery)</li> </ul> <p>&lt;Experience Menu&gt;</p> <ul style="list-style-type: none"> <li>▪ Experience making reserve food for disaster recovery period (blueberry pizza, etc.)</li> <li>▪ Organic and gluten-free food tasting. (rice-flour taiyaki, shaved strawberries, meat-rolled rice balls, etc.)</li> </ul> <p>■ Work time (※Upon Request)<br/>           ■ Participants meet with Awarkation operators and DMOs (*Upon Request)</p> | <ul style="list-style-type: none"> <li>● Business Hotel (with meal options)</li> <li>▪ Smile Hotel Anan</li> <li>● Entire House Rental Type (No meals provided)</li> <li>▪ Awashima Seaside Cottage (Trailer House)</li> <li>▪ Polaris113</li> <li>● Guesthouses (with meals)</li> <li>▪ Atarashiya</li> <li>▪ Yukiyasou</li> <li>▪ Tsubaki Shizen En</li> </ul> |

# Model Course Information【 Anan City, Minami Town】

## For business

### Model course (example)

|      | Time  | Municipalities included in model course | Transportation | Tour Details   | Accommodation   |
|------|-------|---|----------------|--|---|
| DAY2 | AM    | Minami Town                             | by car         | Work time at Tan-nya, a community center located inside the area of traditional Japanese houses  | <ul style="list-style-type: none"> <li>● Entire House Rental Type (Meals are optional)</li> <li>● Minami Awa Sun Line Mobillage</li> <li>● Guesthouses (with meals) &lt;Minami Town&gt;</li> <li>● Meisansou</li> <li>● Yukisou</li> <li>● Funatsuki &lt;Mugi Town&gt;</li> <li>● Shirakiya</li> <li>● Sunabi Katayama</li> <li>● Guesthouses &lt;Minami Town, Hiwasa Area&gt;</li> <li>● Oyado Hiwasa</li> <li>● B&amp;B m4</li> </ul> |
|      | Lunch |   |                | Lunch * On your own in the Hiwasa town area  |   |
|      | PM    |   |                | <p>■ Seaweed and Indigo Section (Approximately 4 Hours)</p> <p>&lt;Topics to be covered by Seaweed and Indigo Section and Hiwasa Fisheries Cooperative Head&gt;</p> <p>* May be subject to change due to circumstances.</p> <ul style="list-style-type: none"> <li>• Current Situation of the Fisheries Industry Due to Isoyake Damage (Sharing Awareness of Issues)</li> <li>• Technical Support for Seaweed Bed Restoration (Blue Carbon Quantification)</li> <li>• Creation of a High-Priced Purchase System for Unused Fish (Mainly Rabbitfish)</li> <li>• Efforts to Commercialize and Expand Consumption of Unused Fish (Mainly Rabbitfish)</li> </ul> <p>&lt;Experience Menu&gt;</p> <ul style="list-style-type: none"> <li>• Stroll in Monzenmachi – Ohama Beach – Ebisu Cave</li> <li>→ Introduction to the history of the town that grew with fisheries and tourism</li> <li>→ Dessert tasting at local stores</li> <li>→ Shopping time</li> <li>* A “Nurukyara Kametaro” will guide the tour depending on the day’s schedule (arrangement necessary).</li> <li>• Niiya Kamaboko Store (20 minutes drive from the Hiwasa area)</li> <li>→ Tour of Aigo (rabbitfish) product processing factory &amp; product tasting</li> <li>■ Dinner * Please arrange your own dinner and accommodation.</li> </ul> <p>&lt;Activities&gt;</p> <ul style="list-style-type: none"> <li>• Casual bicycle touring (Awashima Beach/Nakabayashi Beach area)</li> <li>• SUP experience (Awashima Beach) – only available in the Spring and Fall (Yoga SUP also available)</li> <li>• BMX experience (instructed by a former Australian champion)</li> </ul> <p>&lt;Activities&gt;</p> <ul style="list-style-type: none"> <li>• Snorkeling – only available in the Spring and Fall</li> <li>• Boat Fishing</li> <li>• Wadaiko (Japanese drum) experience</li> </ul> <p>Depending on the time of year, participants can also join the Hiwasa Hachiman Shrine Autumn Festival.</p> |   |
| DAY3 | ALL   | Anan City                               |                |  |   |
|      |       | Minami Town<br>Mugi Town                |                |  |   |